

New Product Release

IP Director Introduction

19 Jan 2009

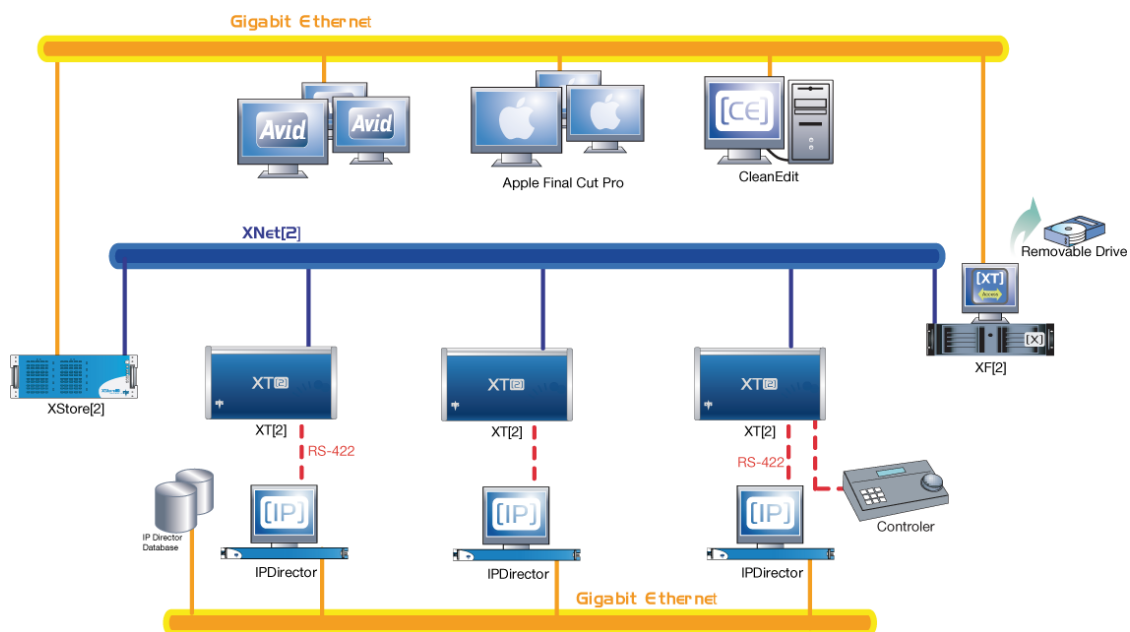
Introduction to IP Director

IP Director is an integrated suite of software to enhance the use of the media captured on the channels of XT series Servers. Running on a Windows based workstation, IP Director allows the user to easily ingest, log, manage, search, track, edit, create clips and highlights, browse and playback any video or audio content.

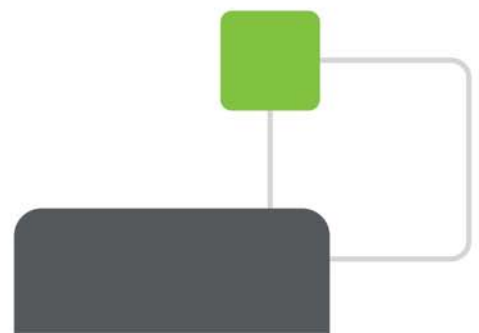


Currently IP Director has become known for its use on 'Big Events', such as the Winter Olympics 2006, FIFA World Cup 2006, and the Asian Games 2006. It has also become a feature of annual events such as French Open Tennis at Roland Garros and Wimbledon. At this type of event the system is fully deployed, using all aspects of the package over many workstations and at all stages of the production process.

However, in the most basic use of IP Director it simply can control channels of an XT Server, accessing the record trains of just one or of any server connected to an XT network. It can control playback channels, make clips, and delay the playback of any feed, performing exactly the same functionality as a dedicated remote panel. IP Director even communicates with the XT using a 9-pin serial connection, but offers the user a familiar Windows based graphical user interface as the controller.



Its functionality extends further than the dedicated control panel in that not only can the operator 'see' all record trains, all network playback channels can be accessed and controlled from one workstation if desired. When this functionality is not desired powerful user rights software can be deployed to restrict a user to limited use.





By using the modular nature of both an XT Server network and the IP Director system an installation can be configured to offer a production the whole range of solutions from basic machine control to logging the content being recorded, adding metadata to clips being made, and providing a fully searchable database to browse and manage the media, control the archiving and the export of media to 3rd party devices such as NLE's.

For more information on how IP Director can be used, please see the [case studies](#) on the EVS website.

